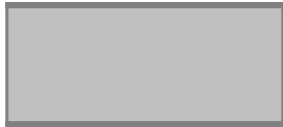


# ORGANIGRAMMA PER AREE

# legenda organigrammi



= Area



= Dipartimento



= U.B.

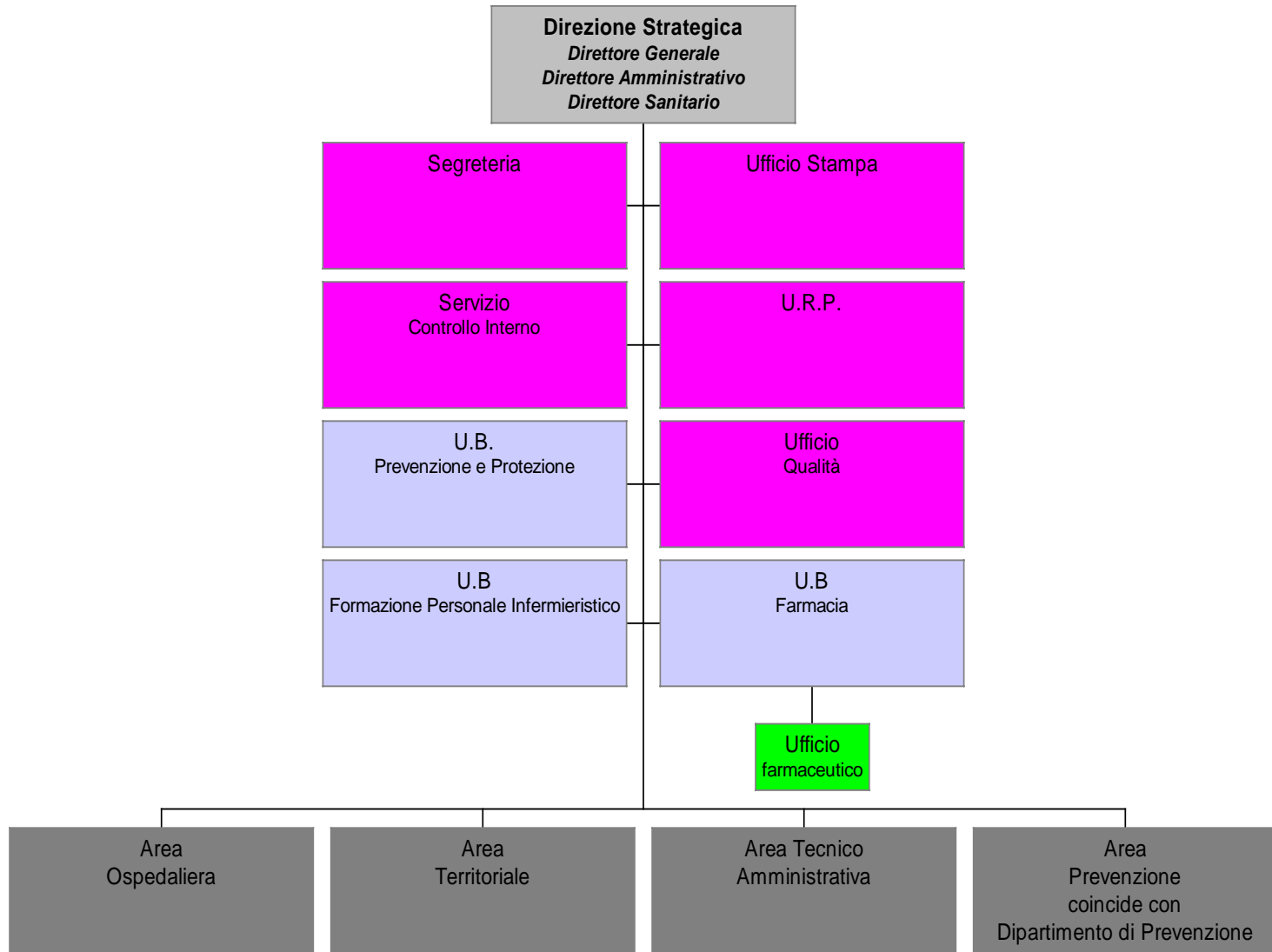


= Struttura Semplice

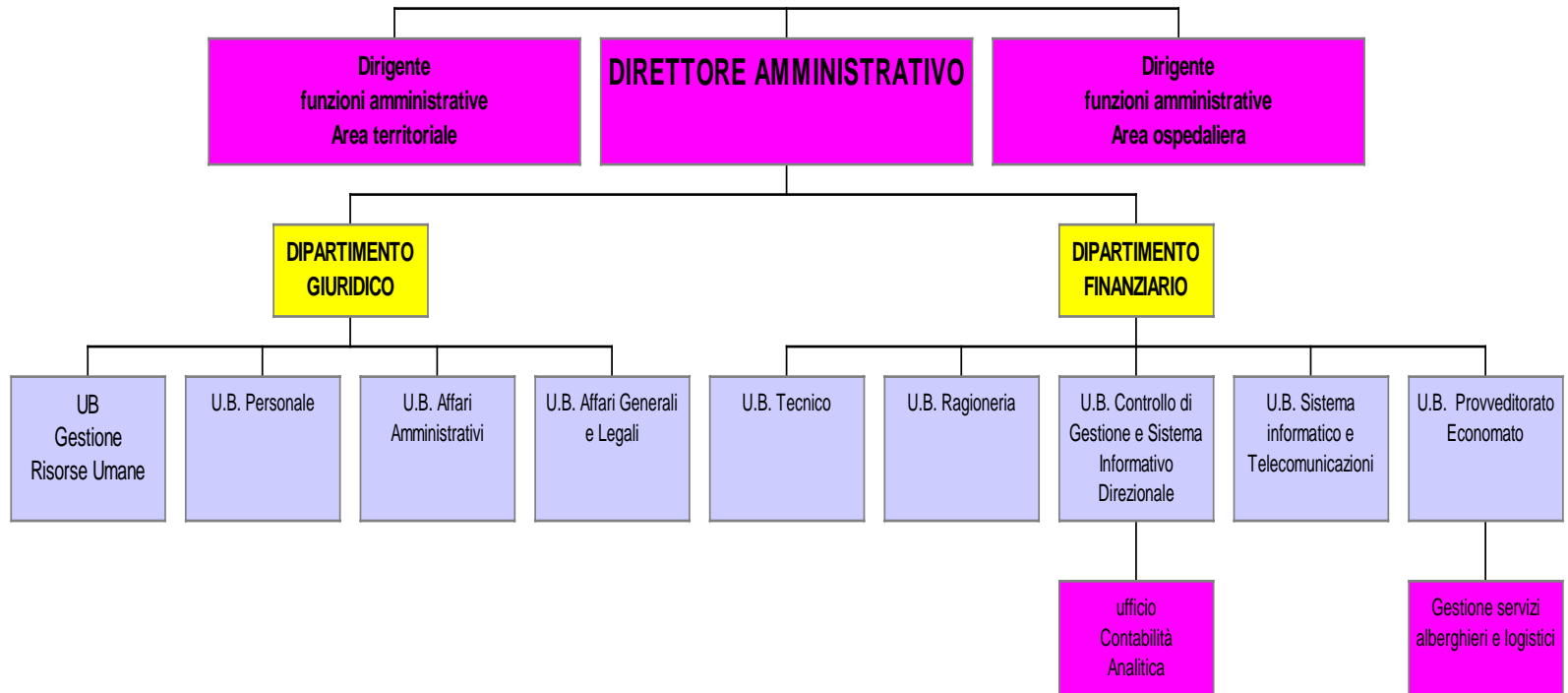


= Ufficio

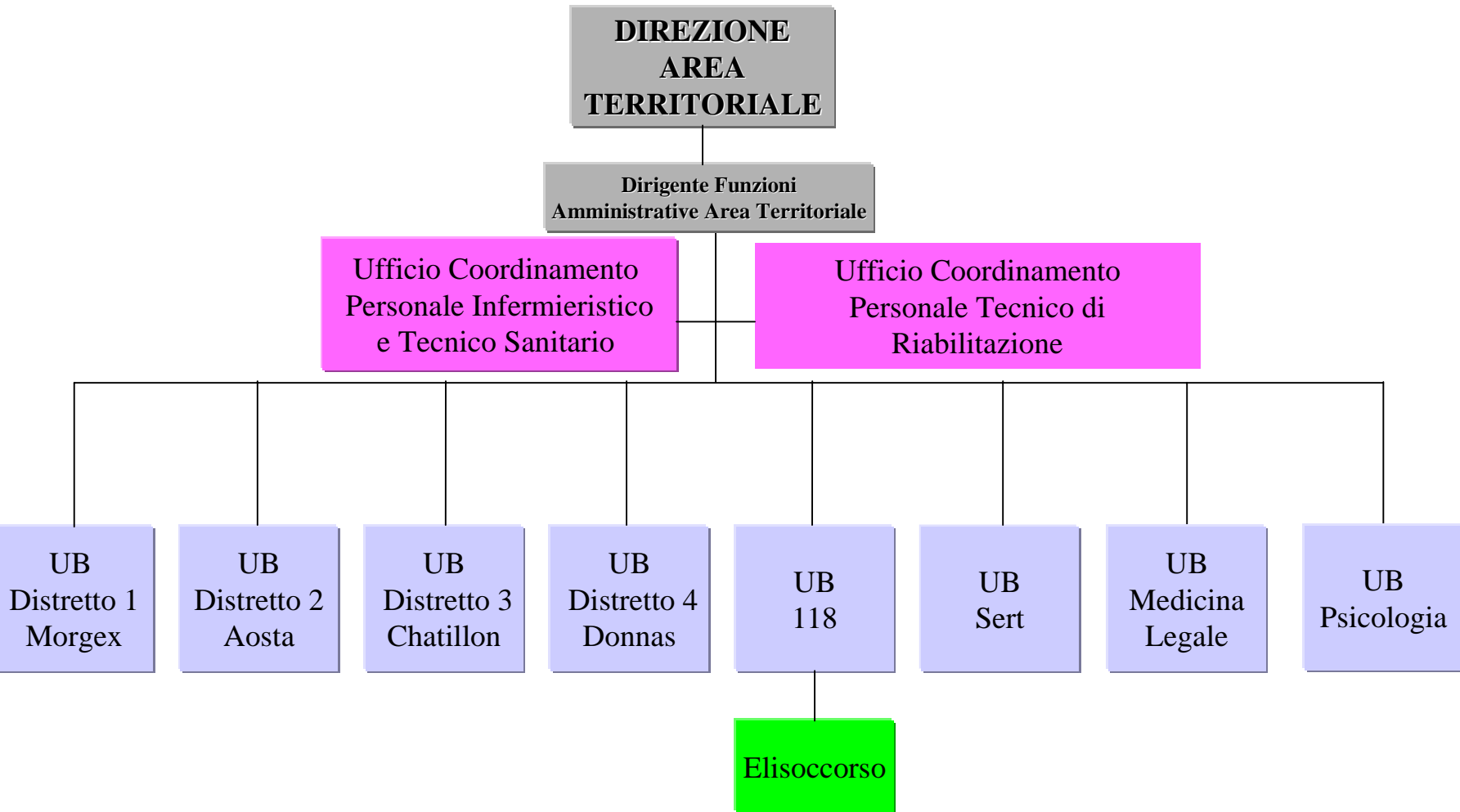
# DIREZIONE STRATEGICA



# AREA TECNICO-AMMINISTRATIVA



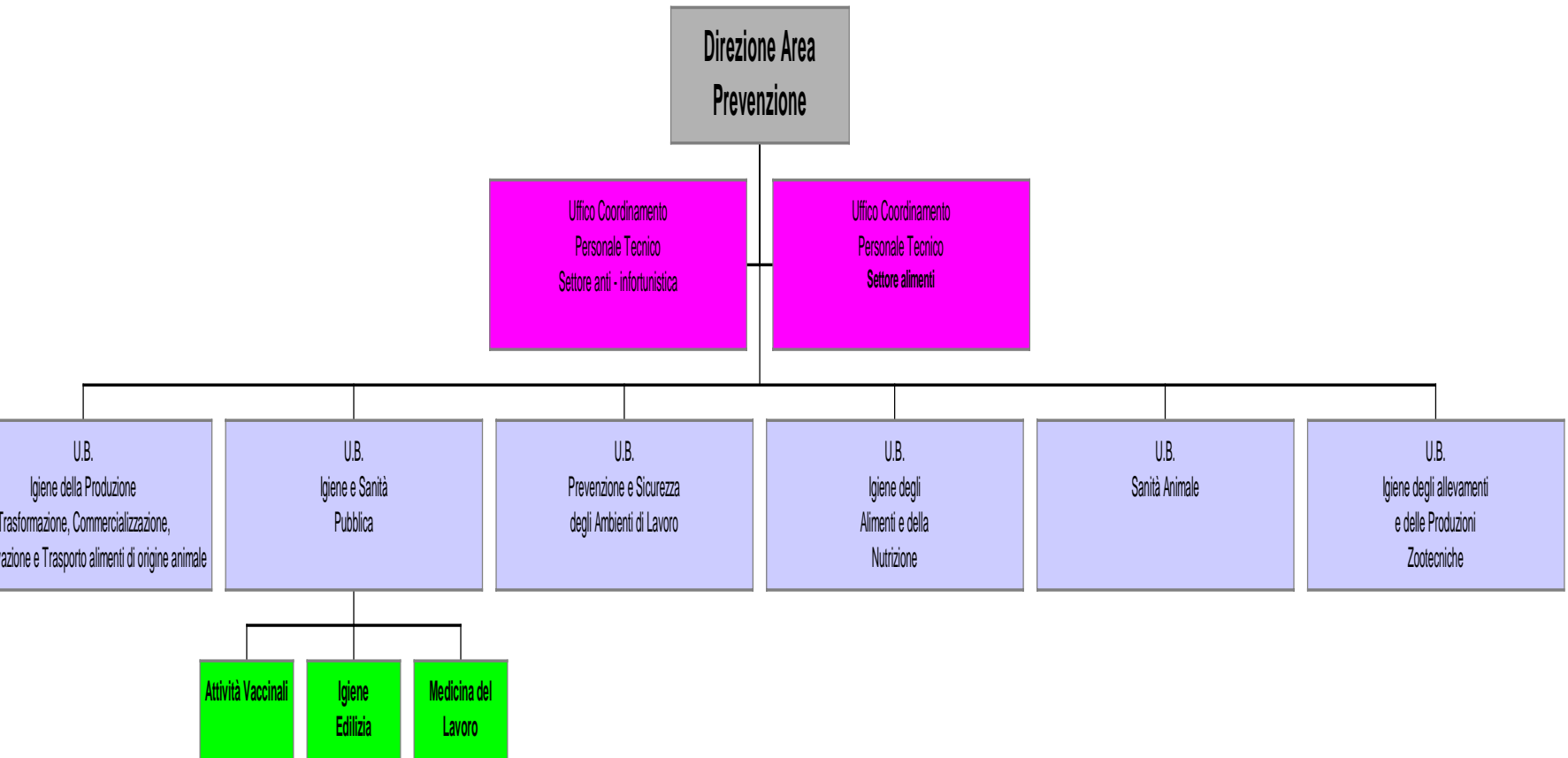
# AREA TERRITORIALE



- ❑ La Direzione di Area Territoriale coordina funzionalmente l'attività dei Centri Traumatologici, in collaborazione con l'U.B. Ortopedia
- ❑ La Struttura Semplice di Elisoccorso è momentaneamente gestita dal Responsabile dell'U.B. 118

# AREA PREVENZIONE

(Coincide con il Dipartimento di Prevenzione di cui alla l.r. 41/95)

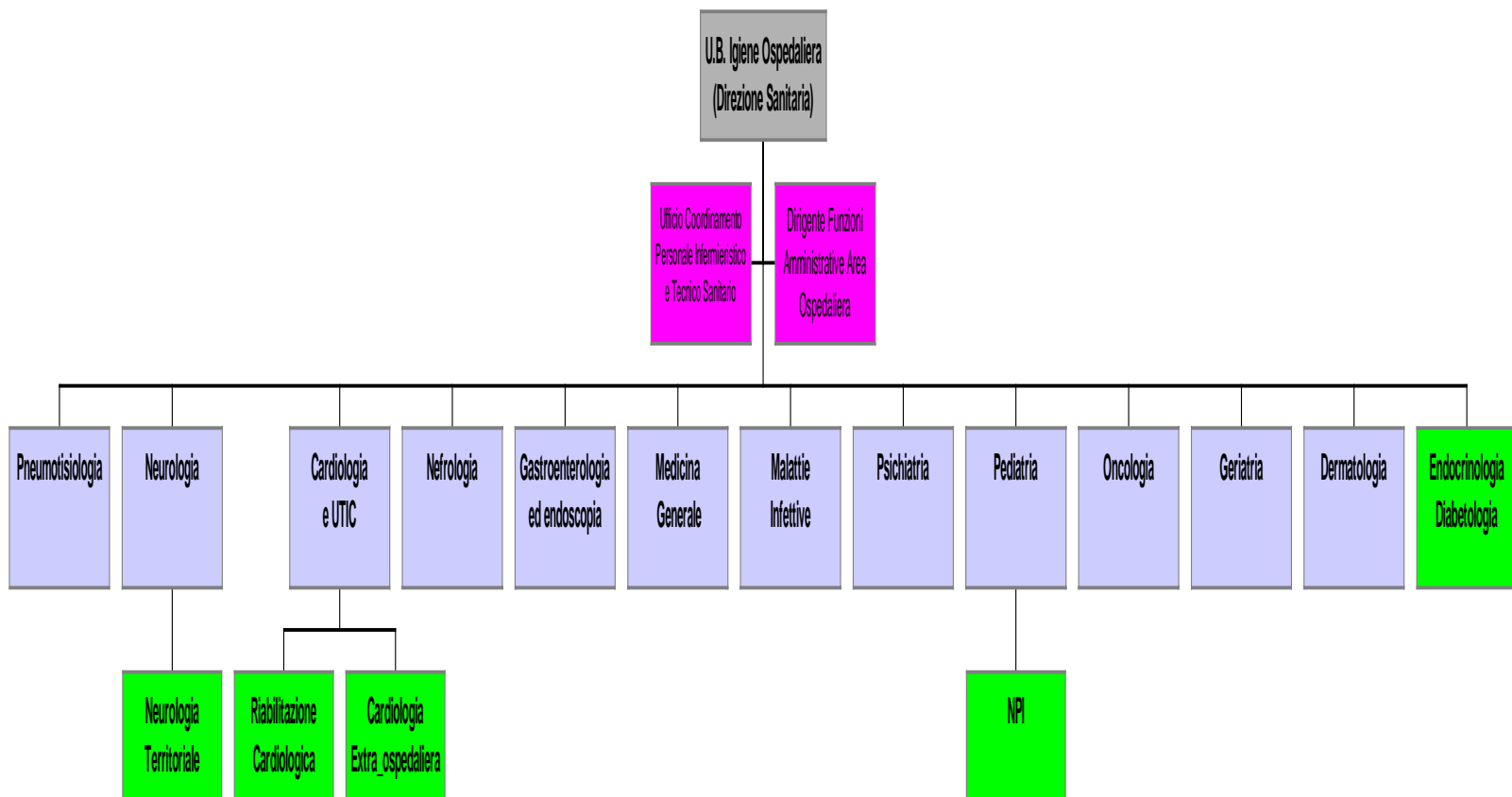


# **STRUTTURE OSPEDALIERE**

## **Complesse e Semplici**

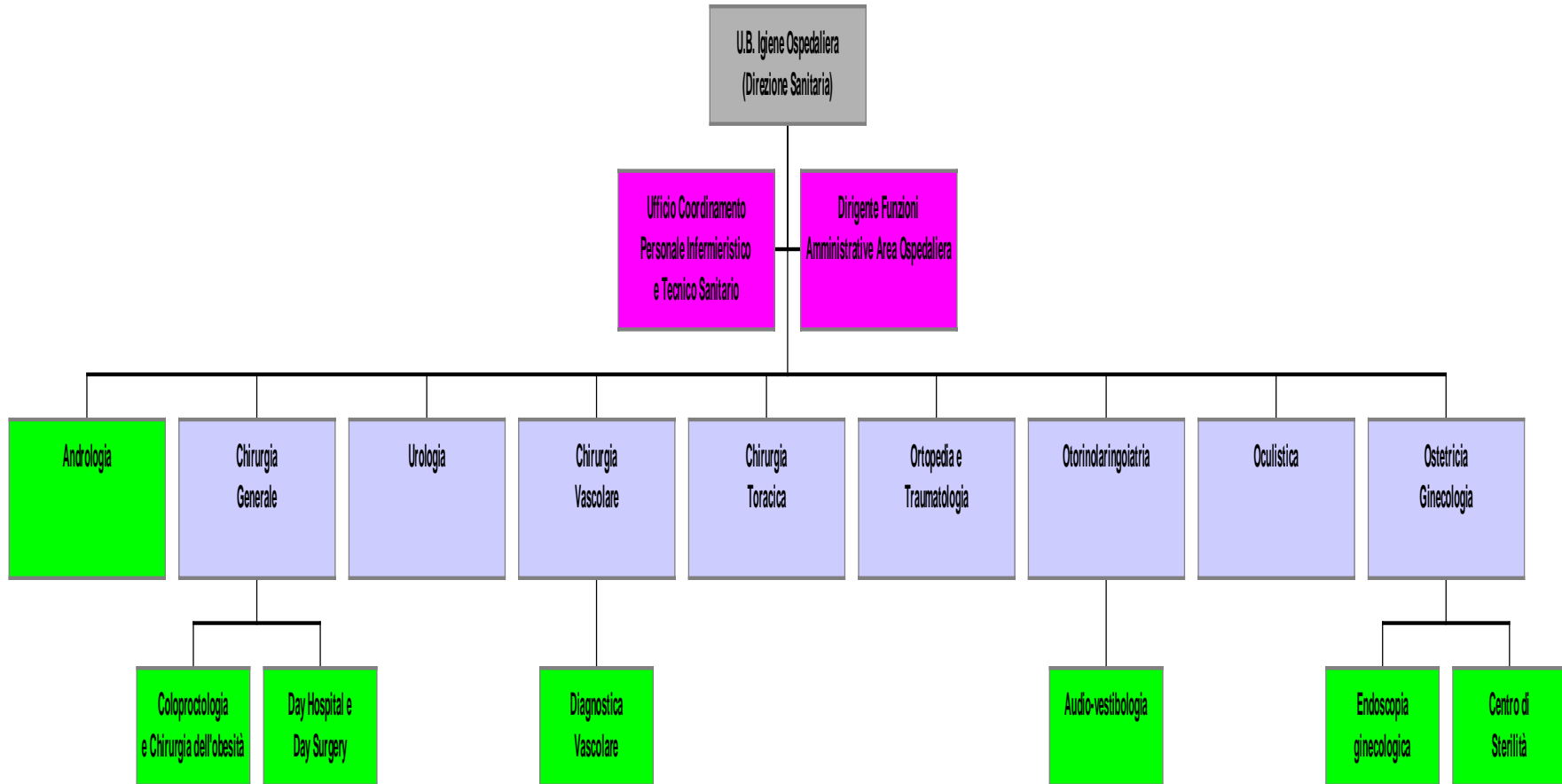
# AREA OSPEDALIERA

## 1) Degenze Mediche



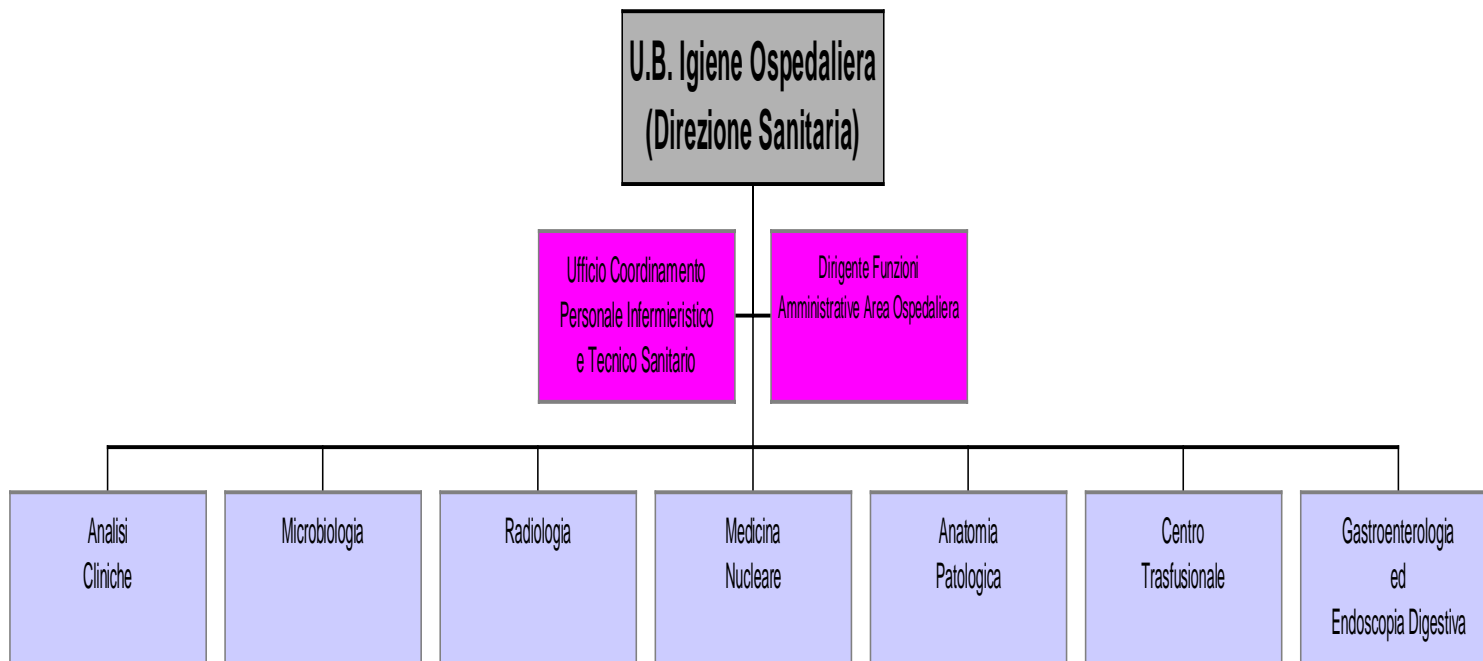
# AREA OSPEDALIERA

## 2) Degenze Chirurgiche



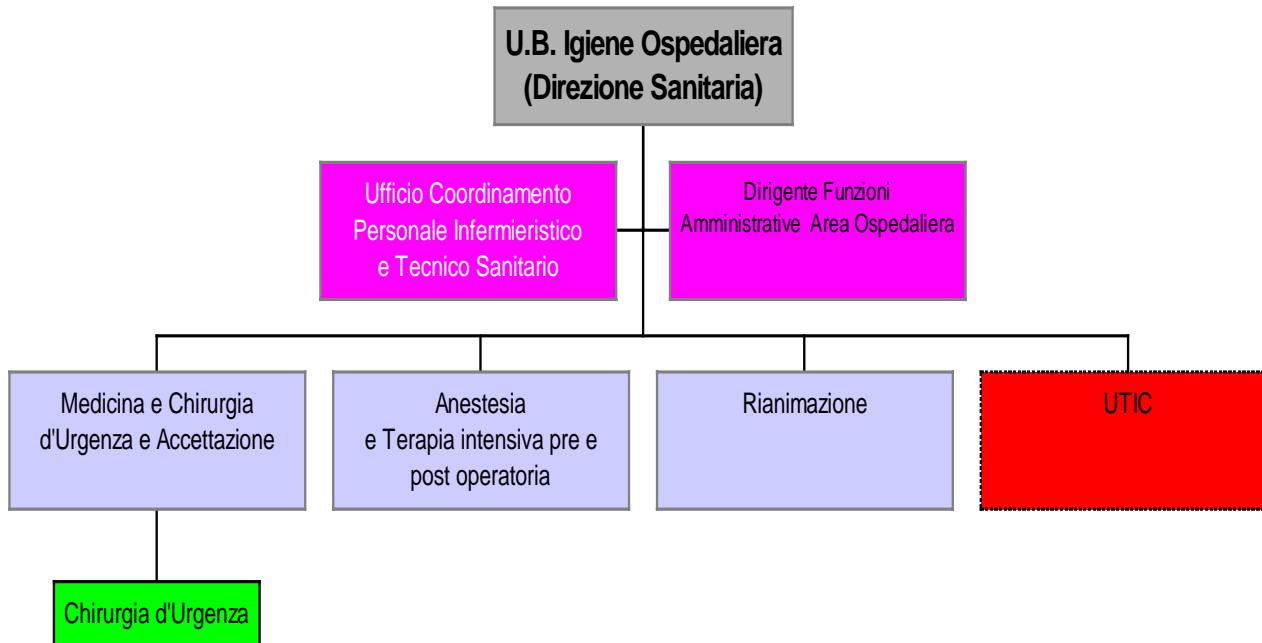
# AREA OSPEDALIERA

## 3) Servizi di Diagnosi



# AREA OSPEDALIERA

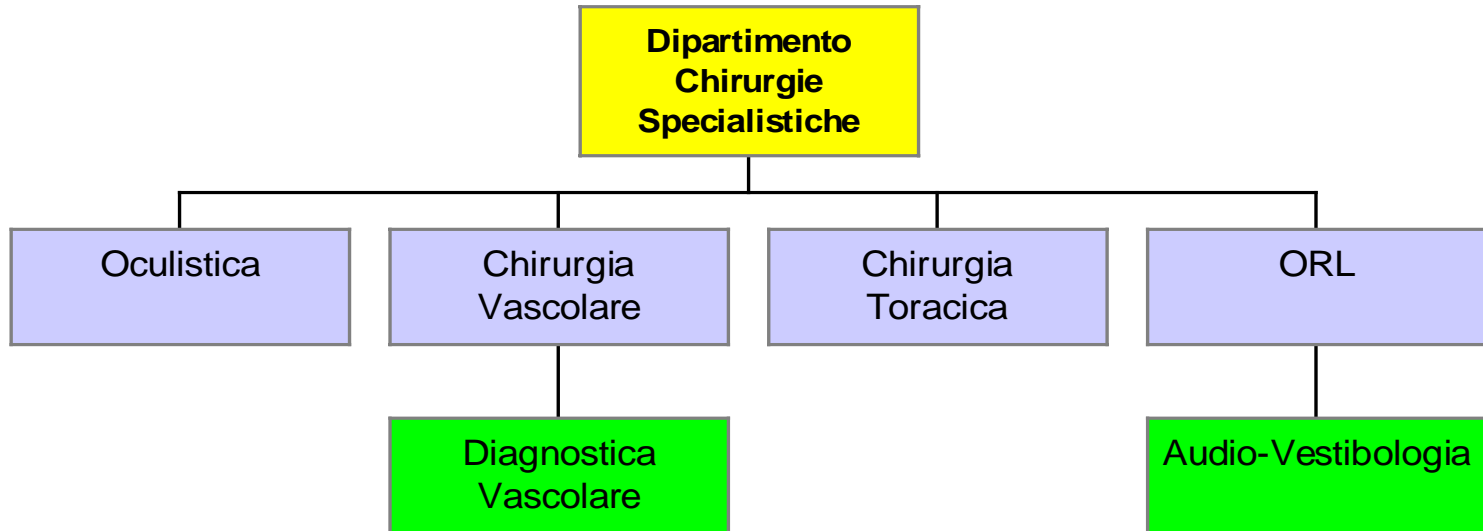
## 4) Area Critica



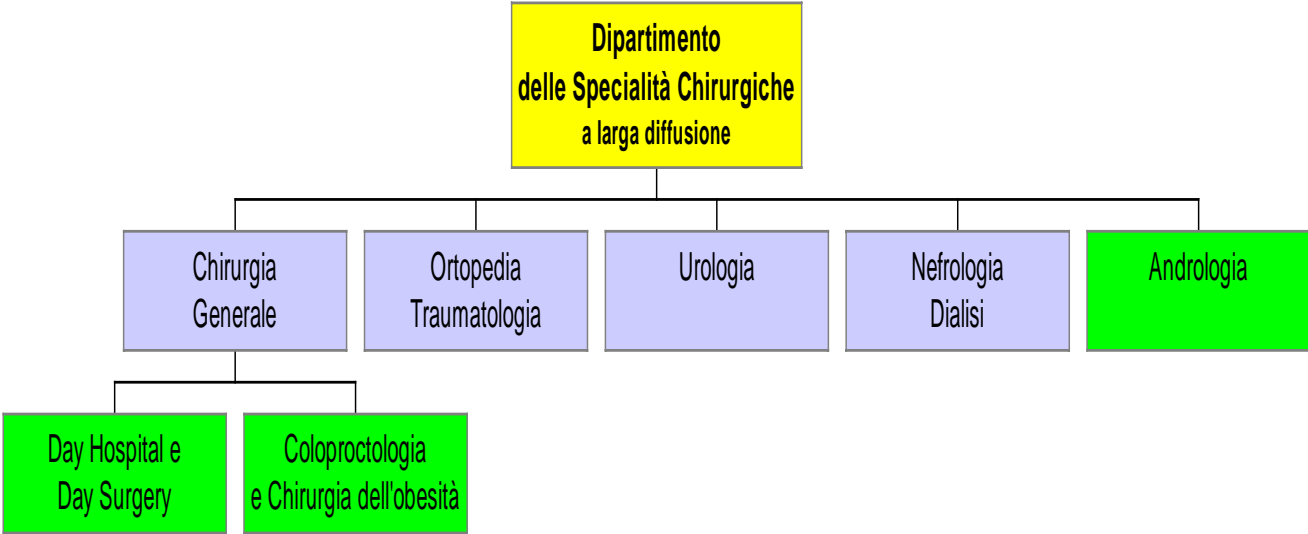
❑ **UTIC = funzione dell'U.B. Cardiologia e UTIC**

# ORGANIGRAMMI PER DIPARTIMENTI

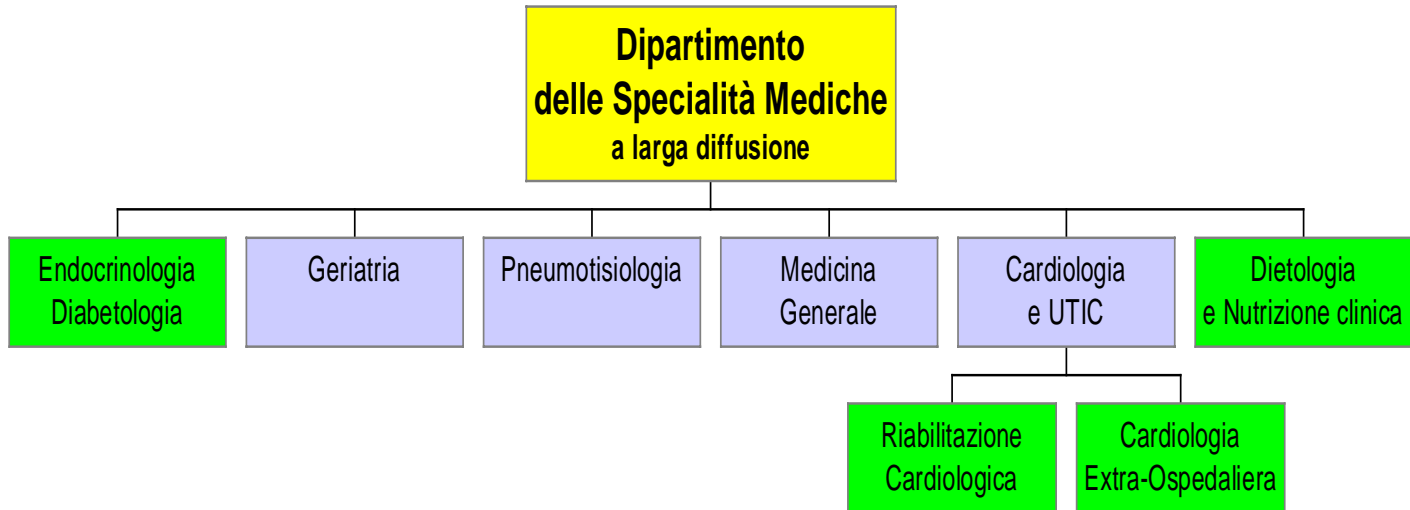
# DIPARTIMENTI GESTIONALI



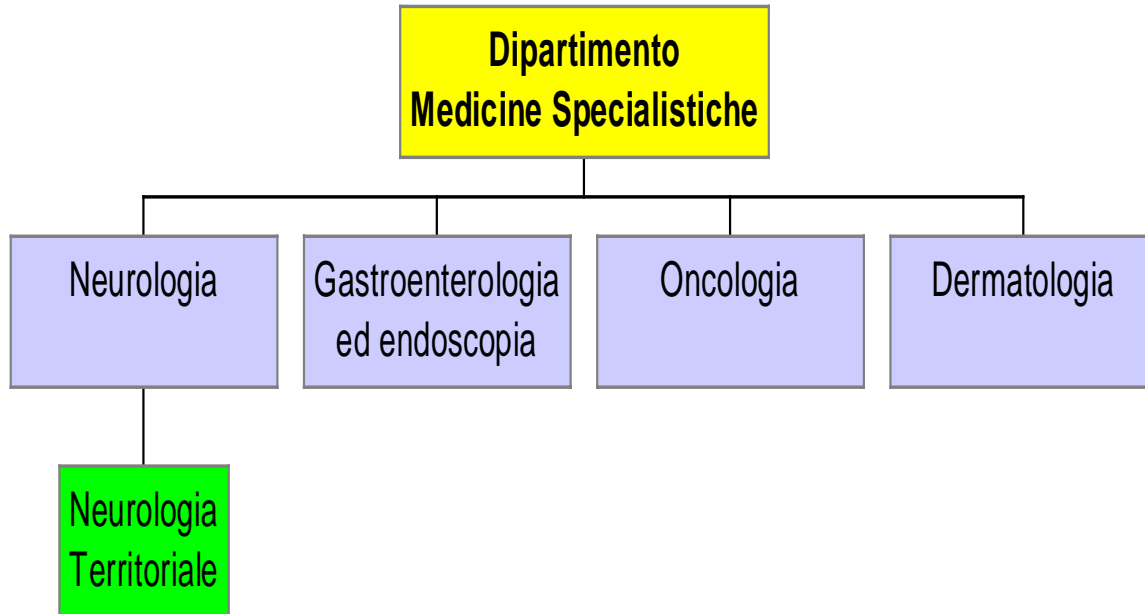
# DIPARTIMENTI GESTIONALI



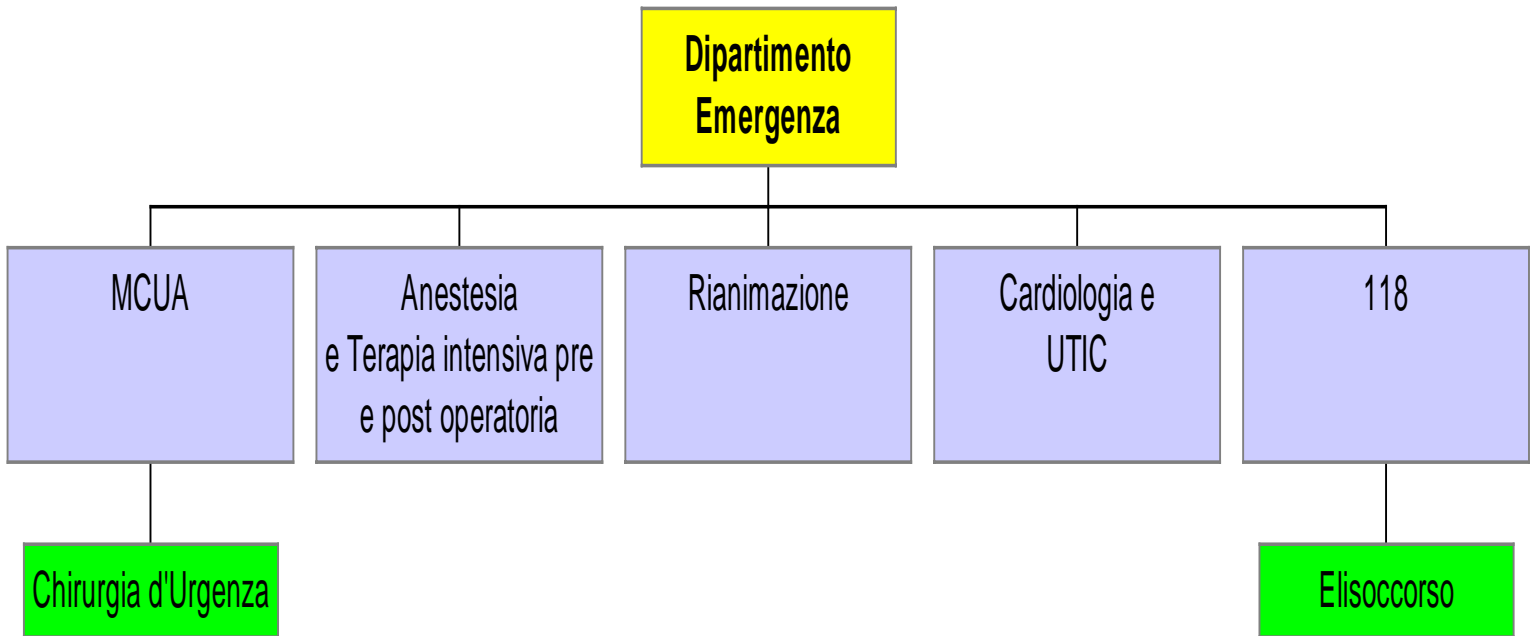
## DIPARTIMENTI GESTIONALI



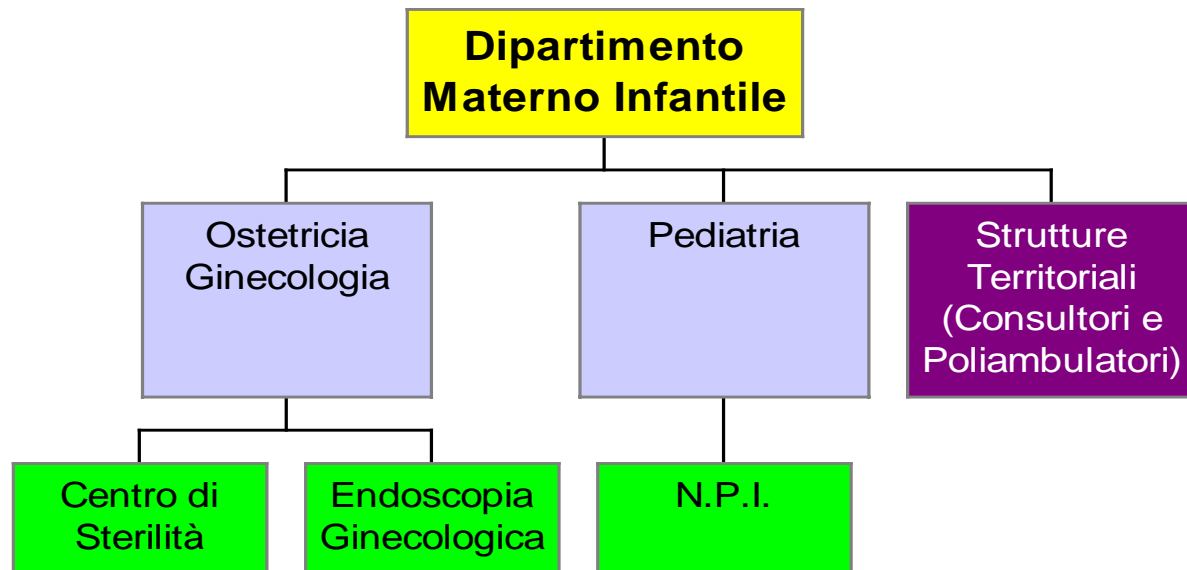
# DIPARTIMENTI GESTIONALI



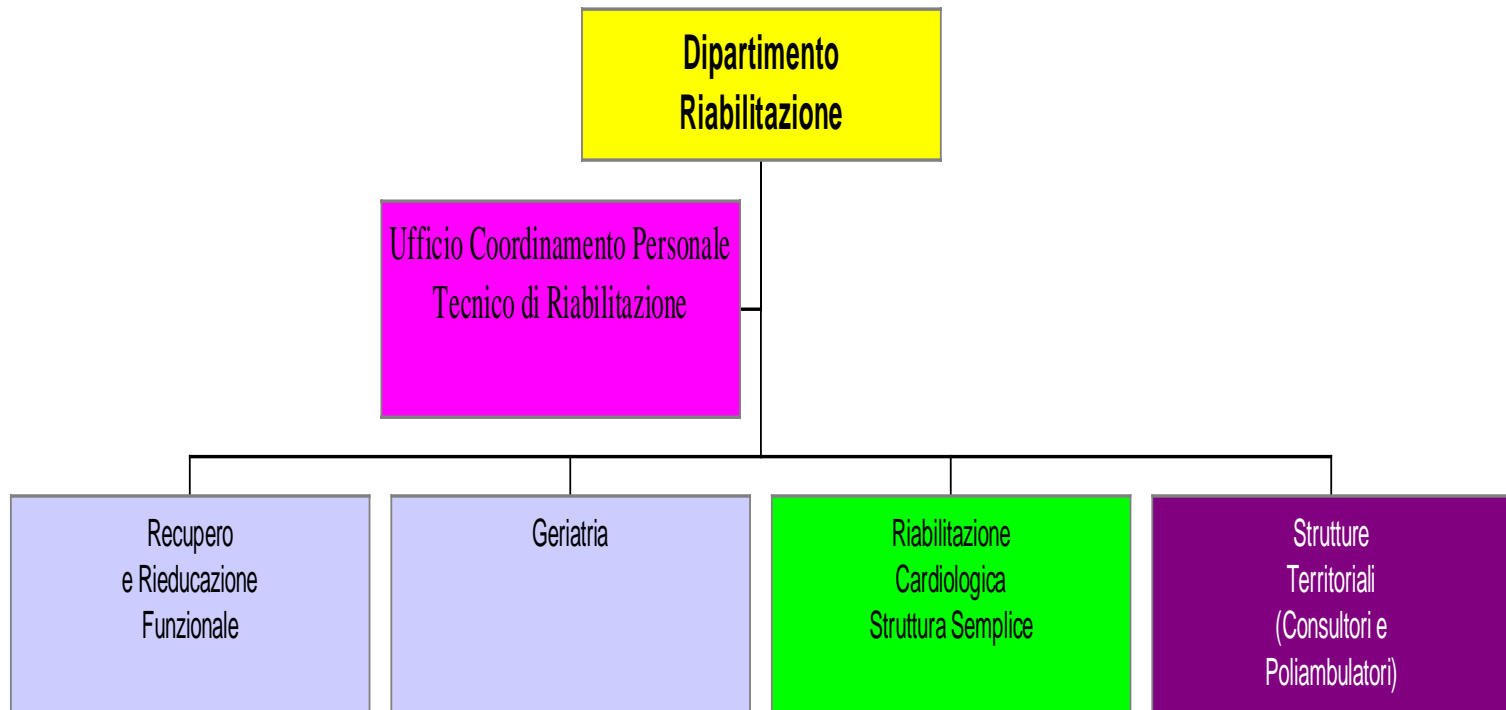
## DIPARTIMENTI FUNZIONALI



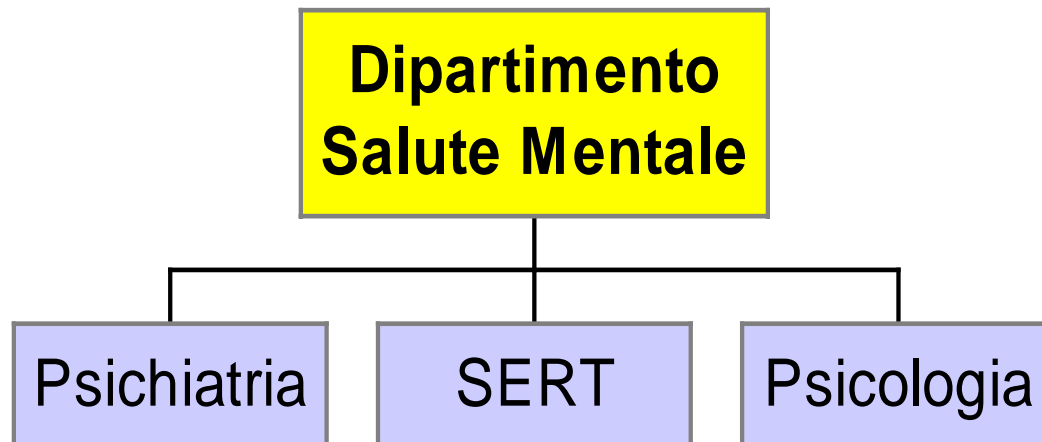
# DIPARTIMENTI GESTIONALI



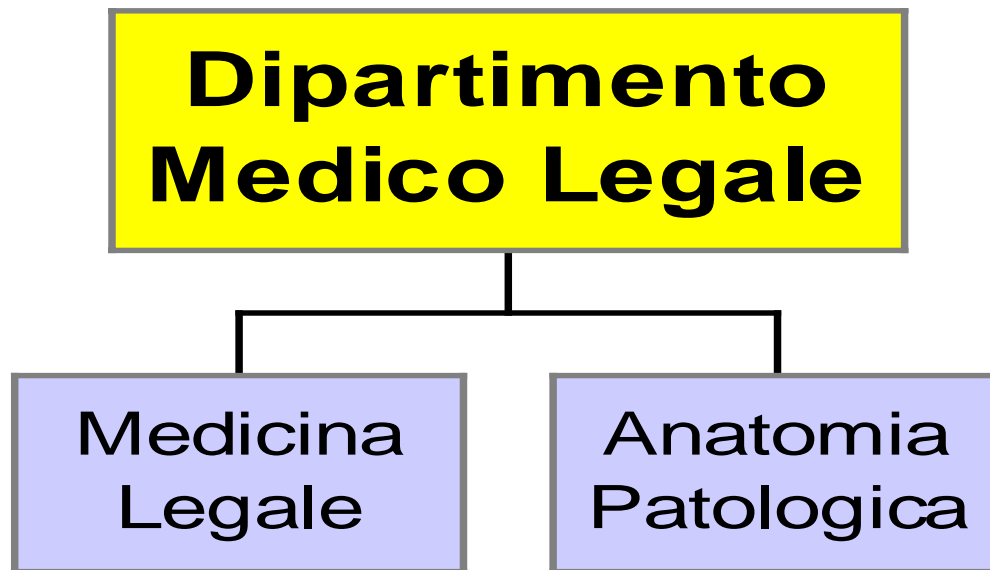
# DIPARTIMENTI GESTIONALI



# DIPARTIMENTI GESTIONALI



# DIPARTIMENTI GESTIONALI



# DIPARTIMENTI GESTIONALI

## Dipartimento Patologia Clinica

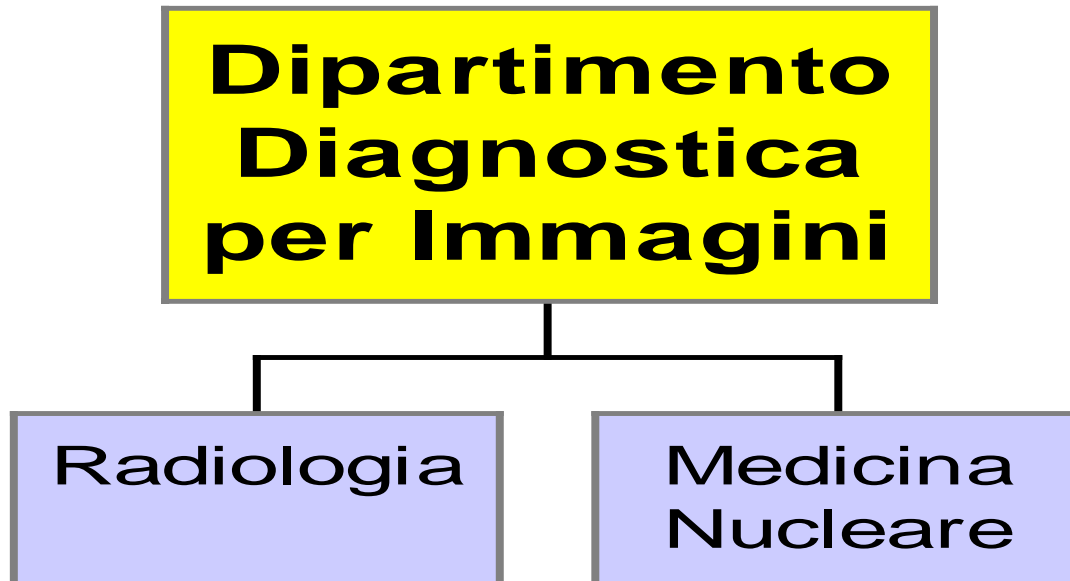
Malattie  
Infettive

Analisi Cliniche

Microbiologia

Centro  
Trasfusionale

# DIPARTIMENTI GESTIONALI



# DIPARTIMENTI TRASVERSALI

